

# WV-U11301-V3

2MP Indoor Box Camera (3.2x zoom)

## 2MP Indoor Box Camera (3.2x zoom)

---



- 2MP Indoor box camera
  - Standard video motion detection using i-VMD
  - Audio recording with built-in microphone
  - 3.2x optical zoom
  - Built-in FIPS 140-3 Level 3 Certified SecureElement (EdgeLock® SE052F NXP® Semiconductors)
  - NDAA Compliant
-

# SPECIFICATIONS

| Camera  |   |
|---|---|
| Image Sensor                                    | Approx. 1/2.8 type CMOS image sensor  |
| Scanning Area                                   | 5.57 mm (H) × 3.13 mm (V) {7/32 inches (H) × 1/8 inches (V)}  |
| Minimum Illumination                            | Color :<br>0.05 lx (30IRE, F1.6, 1/30 s, AGC: 11)*<br>0.06 lx (50IRE, F1.6, 1/30 s, AGC: 11)<br>0.004 lx (50IRE, F1.6, 16/30 s, AGC: 11)*<br>BW :<br>0.03 lx (50IRE, F1.6, 1/30 s, AGC: 11)<br>0.002 lx (50IRE, F1.6, 16/30 s, AGC: 11)*<br>* Converted value |
| White Balance                                   | ATW1/ ATW2/ AWC   |
| Shutter Speed                                   | [30 fps mode] 1/30 Fix to 1/10000 Fix<br>[25 fps mode] 1/25 Fix to 1/10000 Fix  |
| Maximum Shutter                                 | [30 fps mode] Max. 1/4000 s to Max. 16/30 s<br>[25 fps mode] Max. 1/4000 s to Max. 16/25 s  |
| Intelligent Auto                                | On/Off  |
| Super Dynamic                                   | On/Off (Range : 0 to 31)  |
| Dynamic Range                                   | Max. 120 dB (Super Dynamic: On, Level: 31)  |
| Adaptive Black Stretch                          | The level can be set in the range of 0 to 255.  |
| Back Light Compensation/High Light Compensation | Back light compensation (BLC) / High light compensation (HLC) / Off (Range : 0 to 31)<br>*only when Super Dynamic/ Intelligent Auto: Off  |
| Fog Compensation                                | On/Off (Range : 0 to 8)<br>*only when Intelligent Auto / Auto contrast adjust: Off  |
| Maximum Gain (AGC)                              | The level can be set in the range of 0 to 11.   |
| Color/BW (ICR)                                  | Off/ On/ Auto1(Normal) / Auto2(IR Light) / Auto3(SCC)   |
| IR LED Light                                    | -   |
| Digital Noise Reduction                         | The level can be set in the range of 0 to 255.  |
| Video Motion Detection (VMD)                    | On/ Off (4 areas available)   |
| Scene Change Detection (SCD)                    | On/ Off (1 area available)  |
| Audio Detection                                 | On/ Off   |
| AI Sound Classification                         | -   |
| Analytics                                       | i-VMD   |
| Maximum No. of Applications                     | 1 (Non AI app)  |
| Privacy Zone                                    | On/Off (Up to 8 zones available)  |
| VIQS  | On/Off (Up to 8 zones available)  |
| Image Rotation                                  | 0° (Off) / 90° / 180° (Upside-down) / 270°  |
| Camera Title (OSD)                              | On/Off<br>Up to 40 characters, Up to 2 lines (alphanumeric characters, marks)   |

## Lens

|                           |  |
|---------------------------|--|
| Optical Zoom              | 3.2x (Motorized zoom / Motorized focus)  |
| Digital (electronic) Zoom | max 9.6x   |
| Focal Length              | 3.2 mm – 10.2 mm {1/8 inches – 13/32 inches}   |
| Angular Field of View     | [16:9 mode]<br>Horizontal: 31° (TELE) – 114° (WIDE)<br>Vertical: 17° (TELE) – 58° (WIDE)<br>[4:3 mode]<br>Horizontal: 23° (TELE) – 80° (WIDE)<br>Vertical: 17° (TELE) – 58° (WIDE) |
| Maximum Aperture Ratio    | 1:1.6 (WIDE) – 1:3.2 (TELE)  |
| Focus Range               | 2.0m {78-3/4 inches} – ∞   |
| Aperture Range            | F1.6 - close   |

| DORI                       |   |
|----------------------------|---|
| Detect (25ppm / 8ppf)      | 138.5m {454.3ft} (TELE) 24.9m {81.8ft} (WIDE) |
| Observe (62.5ppm / 19ppf)  | 55.4m {181.7ft} (TELE) 10.0m {32.7ft} (WIDE)  |
| Recognize (125ppm / 38ppf) | 27.7m {90.9ft} (TELE) 5.0m {16.4ft} (WIDE)    |
| Identify (250ppm / 76ppf)  | 13.8m {45.4ft} (TELE) 2.5m {8.2ft} (WIDE)     |

| System on Chip       |                |
|----------------------|----------------|
| System on Chip (SoC) | Ambarella S6LM |

| Browser GUI               |   |
|---------------------------|---|
| GUI / Setup Menu Language | English, Italian, French, German, Spanish, Portuguese, Russian, Chinese, Japanese |
| Browser *1                | Microsoft Edge, Firefox, Google Chrome  |

| Network                                |   |
|--|---|
| Network IF                             | 10BASE-T/100BASE-TX, RJ45 connector   |
| Resolution                             | [16:9mode(30fps mode)] [16:9mode(25fps mode)]<br>1920x1080/1280x720/640x360/320x180<br>[4:3mode(30fps mode)] [4:3mode(25fps mode)]<br>1280x960/640x480/320x240  |
| H.265/H.264 Transmission Priority/Type | [Transmission priority]<br>Constant bit rate/ VBR/ Frame rate/ Best effort<br>[Transmission type]<br>Unicast port (AUTO)/ Unicast port (MANUAL)/ Multicast  |
| No. of Stream                          | 4   |
| JPEG (MJPEG) Image Quality             | 10 steps: 0(SUPER FINE) - 9(LOW)  |
| Smart Coding                           | [GOP(Group of pictures) control]<br>Off/ Low (Variable GOP 1s-8s)/Mid (Variable GOP 4s-16s)/ Advanced (Fixed GOP 60 seconds with 1 second Key frame)/ Frame rate control (Variable GOP 4s-16s with frame rate control)<br>*Advanced and Frame rate control are only available with H.265.<br>[Auto VQS]<br>On/ Off                            |
| Audio Compression Method *2            | G.726 (ADPCM): 16 kbps/ 32 kbps<br>G.711: 64 kbps<br>AAC-LC 64 kbps/ 96 kbps/ 128 kbps  |
| Audio Transmission Mode                | Off / Mic input   |
| Supported Protocol                     | IPv6: TCP/IP, UDP/IP, HTTP, HTTPS, SSL/TLS, SMTP, DNS, NTP, SNMPv1/v2/v3, DHCPv6, RTP, MLD, ICMP, ARP, IEEE 802.1X, DiffServ, FTP, SFTP, LLDP, MQTT<br>IPv4: TCP/IP, UDP/IP, HTTP, HTTPS, SSL/TLS, RTSP, RTP, RTP/RTCP, SMTP, DHCP, DNS, DDNS, NTP, SNMPv1/v2/v3, UPnP, IGMPv3, ICMP, ARP, IEEE 802.1X, DiffServ, SRTP, FTP, SFTP, LLDP, MQTT |
| No. of Simultaneous Users              | Up to 14 users (Depends on network conditions)  |

|                                   |  |
|-----------------------------------|--|
| Secure                            | FIPS 140-3 level 3 (NXP® EdgeLock® SE052F), Device Certificate GlobalSign® pre-installed, HTTPS, User authentication, digest authentication, Host authentication, IEEE802.1X, System log, Image transmission log, brute-force protection, Alteration Detection, Secure boot, Signed firmware |
| SDXC/SDHC/SD Memory Card (Option) | microSDXC memory card: 64 GB, 128 GB, 256 GB, 512 GB<br>microSDHC memory card: 4 GB, 8 GB, 16 GB, 32 GB<br>microSD memory card: 2 GB   |
| Mobile Terminal Compatibility     | iPad / iPhone (iOS 8.0 or later), Android™ terminals   |
| ONVIF®Profile                     | G / S / T  |

| Alarm         |  |
|---------------|--|
| Alarm Source  | VMD alarm, SCD alarm, Command alarm, Audio detection alarm   |
| Alarm Actions | SDXC/SDHC/SD memory recording, E-mail notification, HTTP alarm notification Indication on browser, TCP alarm notification output |

| Input/Output           |  |
|------------------------|--|
| Built-in Microphone    | Nondirectional electret condenser microphone         |
| Audio Input            | [For microphone input]<br>-<br>[For line input]<br>- |
| Audio Output           | -  |
| External I/O Terminals | -  |
| Monitor Output         | -  |

| General                          |   |
|----------------------------------|---|
| Safety                           | UL (UL62368-1 3Ed), c-UL (CAN/CSA C22.2 NO.62368-1-19), IEC62368-1 3Ed.   |
| EMC                              | FCC Part15 Subpart B ClassA, ICES-003 Issue 7 ClassA, EN55032 ClassA, EN55035   |
| Power Source / Power Consumption | [Power Source]<br>PoE (IEEE802.3af Compliant)<br>[Power Consumption]<br>PoE DC 48 V : 140 mA / Approx. 6.7 W (Class 0 device) |
| Ambient Operating Temperature    | -10 °C to +50 °C {+14 °F to +122 °F}  |
| Ambient Operating Humidity       | 10 % to 90 % (no condensation)  |
| Dimensions                       | 59 mm (W) x 49 mm (H) x 142mm (D)<br>{2-5/16 inches (W) x 1-15/16 inches (H) x 5-19/32 inches (D)}<br>(excluding projection)  |
| Mass (approx.)                   | Approx. 290 g {0.64 lbs}  |
| Finish                           | Main body: PC resin, i-PRO white  |
| Easy Kitting                     | Supported   |

## NOTES

\*1 For information on the operation verification of the web browsers, refer to our support website <Control No.: C0132>.

\*2 When recording audio on an SD memory card, only use AAC-LC (Advanced Audio Coding - Low Complexity) .

### Important

- Safety Precautions: Carefully read the Basic Information, Installation Guide and Operating Instructions before using this product.
- i-PRO Co., Ltd. cannot be held responsible for the performance of the network and/or any third-party products (including applications) used on the network.
- Masses and dimensions are approximate.
- Specifications are subject to change without notice.

Trademarks and registered trademarks

- iPad and iPhone are trademarks of Apple Inc., registered in the U.S. and other countries. – Android is a trademark of Google LLC.
- ONVIF is a trademark of ONVIF, Inc.
- All other trademarks identified herein are the property of their respective owners

©i-PRO Co., Ltd All rights reserved / September 2025

## OPTIONAL ACCESSORIES

Select a compatible accessory

[Accessory Selector \(i-pro.com\)](http://i-pro.com).



WV-QLR100-W  
Light Rail Mount  
Bracket



WV-QCL102-W  
Universal Camera  
Mount Bracket



WV-SDB256G  
i-PRO SD Memory Card



WV-SDB128G  
i-PRO SD Memory Card



WV-SDB064G  
i-PRO SD Memory Card



WV-SDB032G  
i-PRO SD Memory Card



WJ-PU201P  
PoE Injector

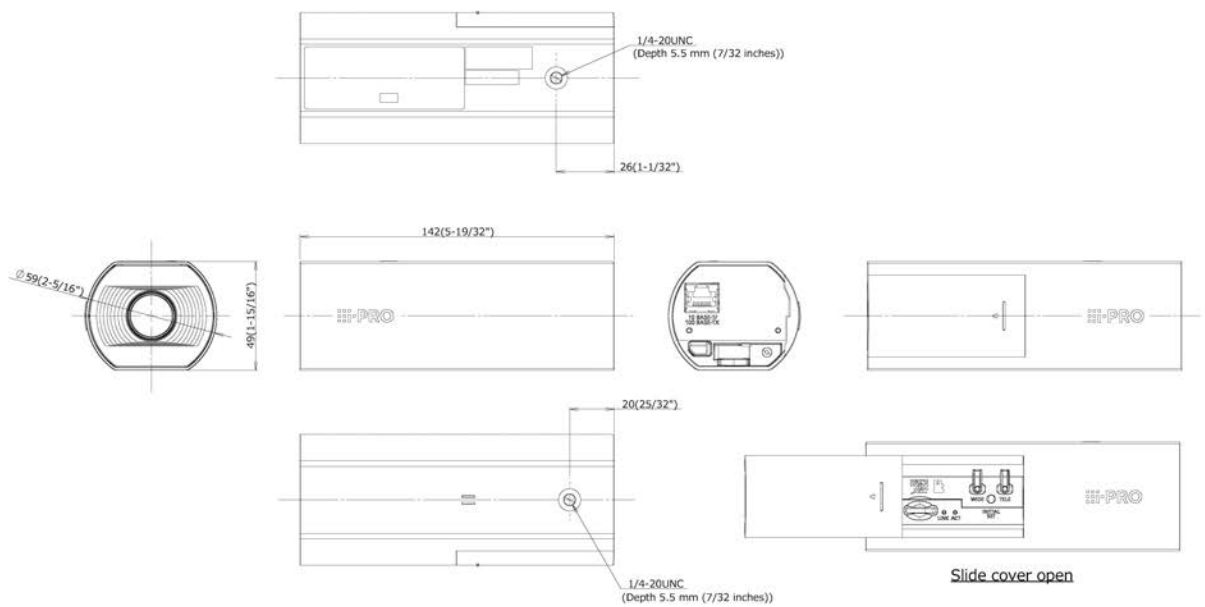


WJ-PU201F/G  
PoE Injector



WJ-PU201/G  
PoE Injector

APPEARANCE



Unit:mm  
Mass : Approx. 290 g (0.64 lbs)

---

### Important

- Safety Precautions : Carefully read the Basic Information, Installation Guide and Operating Instructions before using this product.
- i-PRO Co., Ltd. cannot be held responsible for the performance of the network and/or other manufacturers' products used on the network.
- Masses and dimensions are approximate.
- Specifications are subject to change without notice.

### Trademarks and registered trademarks

- iPad and iPhone are trademarks of Apple Inc., registered in the U.S. and other countries. – Android is a trademark of Google LLC.
  - ONVIF is a trademark of ONVIF, Inc.
  - All other trademarks identified herein are the property of their respective owners.
-